

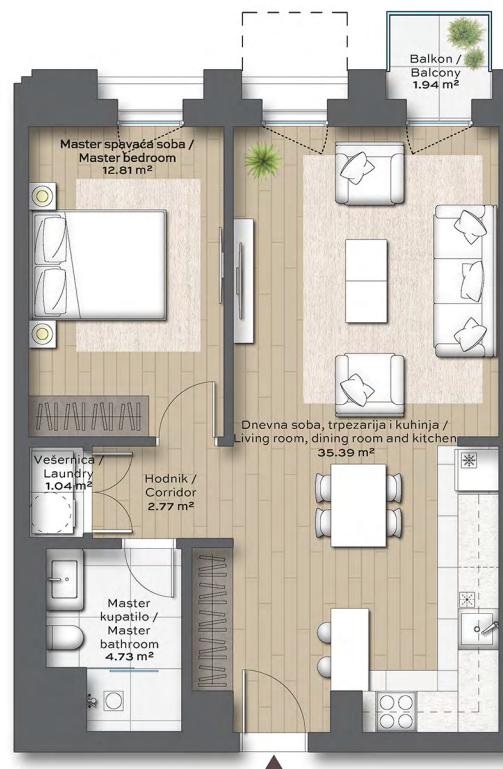


# THE BRISTOL RESIDENCES Belgrade

## One Bedroom

Stan Br. Unit No. A109

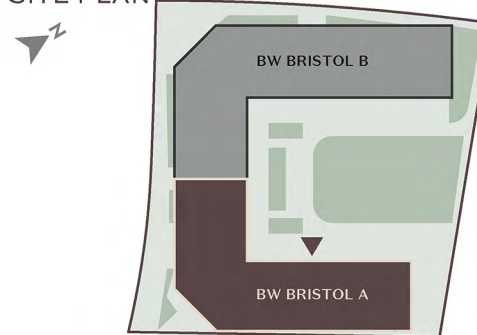
	DIMENZIJE DIMENSIONS
Površina Stana Apartment Area	56.80 m <sup>2</sup>
Površina Terase Terrace Area	1.94 m <sup>2</sup>
Ukupna Površina Total Area	58.74 m <sup>2</sup>



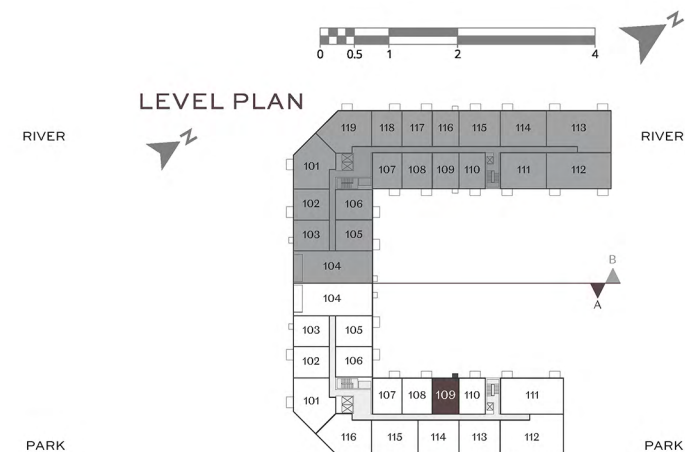
MASTER PLAN



SITE PLAN



LEVEL PLAN



Napomena: Svi materijali, dimenzije i crteži su okvirni. Kalkulacija površina unutrašnjeg i spoljašnjeg prostora urađena je u skladu sa važećim standardom (SRPS U.C2.100:2002) i predstavlja neto površinu stambene jedinice.

Disclaimer: All materials, dimensions and drawings are approximate. Calculation of internal and external area is fully compliant with local standards (SRPS U.C2.100:2002) and as such it represents the net area of the unit.



# THE BRISTOL

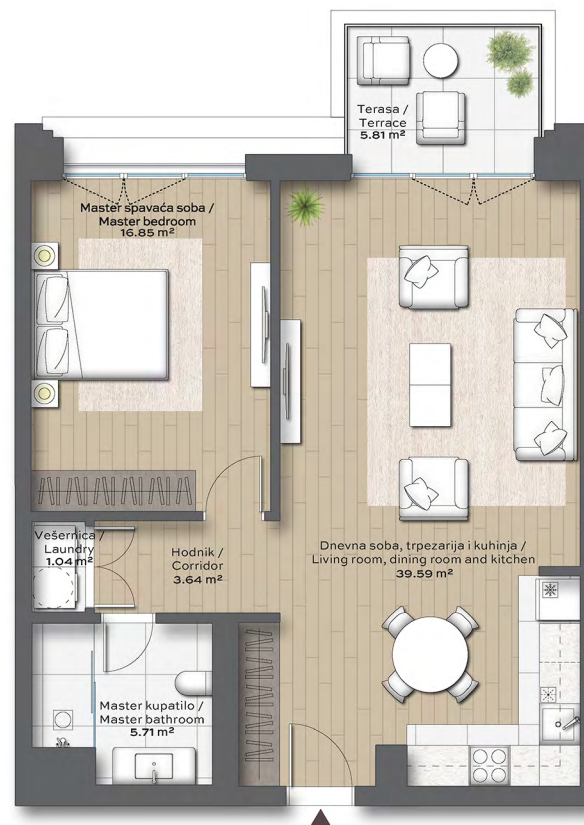
RESIDENCES  
Belgrade

## One Bedroom

Stan Br. Unit No. A102

DIMENZIJE  
DIMENSIONS

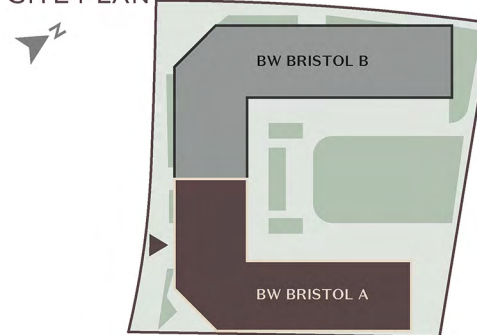
Površina Stana Apartment Area	66.83 m <sup>2</sup>
Površina Terase Terrace Area	5.81 m <sup>2</sup>
Ukupna Površina Total Area	72.64 m <sup>2</sup>



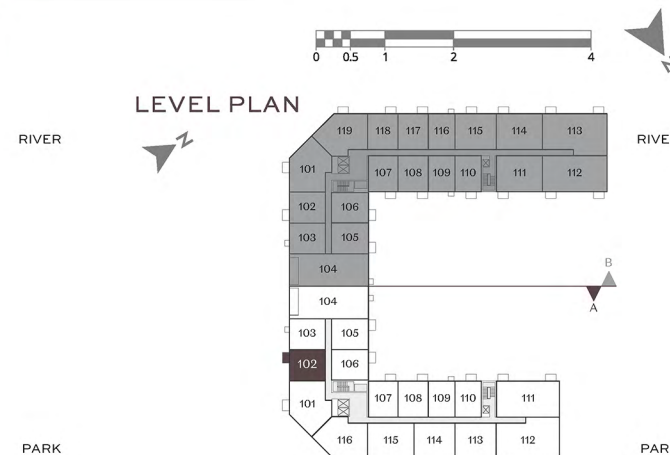
MASTER PLAN



SITE PLAN



LEVEL PLAN



Napomena: Svi materijali, dimenzije i crteži su okvirni. Kalkulacija površina unutrašnjeg i spoljašnjeg prostora urađena je u skladu sa važećim standardom (SRPS U.C2.100:2002) i predstavlja neto površinu stambene jedinice.

Disclaimer: All materials, dimensions and drawings are approximate. Calculation of internal and external area is fully compliant with local standards (SRPS U.C2.100:2002) and as such it represents the net area of the unit.





# THE BRISTOL

RESIDENCES  
Belgrade

## Two Bedroom

Stan Br. Unit No. A113

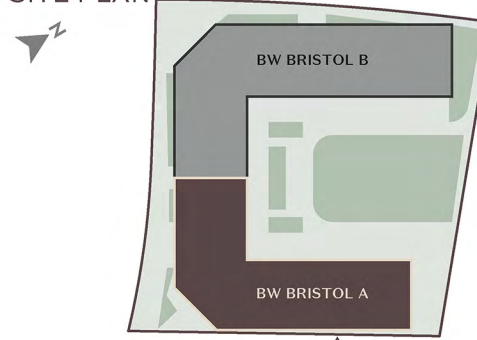
	DIMENZIJE DIMENSIONS
Površina Stana Apartment Area	86.71 m <sup>2</sup>
Površina Terase Terrace Area	5.81 m <sup>2</sup>
Ukupna Površina Total Area	92.52 m <sup>2</sup>



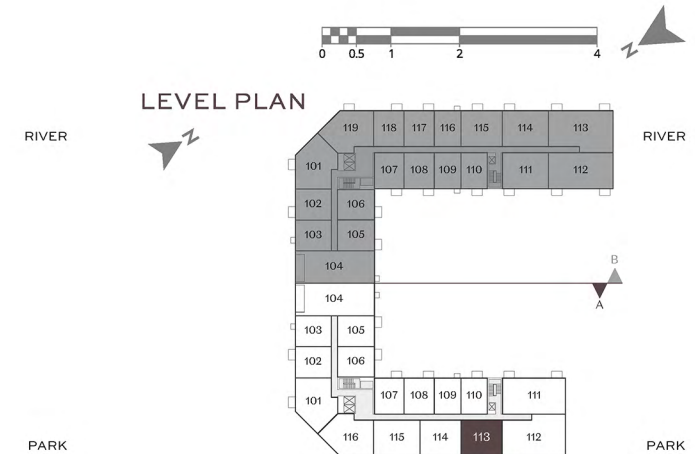
MASTER PLAN



SITE PLAN



LEVEL PLAN



Napomena: Svi materijali, dimenzije i crteži su okvirni. Kalkulacija površina unutrašnjeg i spoljašnjeg prostora urađena je u skladu sa važećim standardom (SRPS U.C2.100:2002) i predstavlja neto površinu stambene jedinice.  
Disclaimer: All materials, dimensions and drawings are approximate. Calculation of internal and external area is fully compliant with local standards (SRPS U.C2.100:2002) and as such it represents the net area of the unit.



# THE BRISTOL RESIDENCES Belgrade

## Two Bedroom Stan Br. Unit No. A115

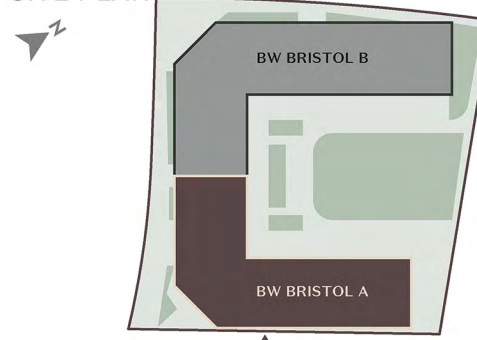
	DIMENZIJE DIMENSIONS
Površina Stana Apartment Area	98.59 m <sup>2</sup>
Površina Terase Terrace Area	5.81 m <sup>2</sup>
Ukupna Površina Total Area	104.40 m <sup>2</sup>



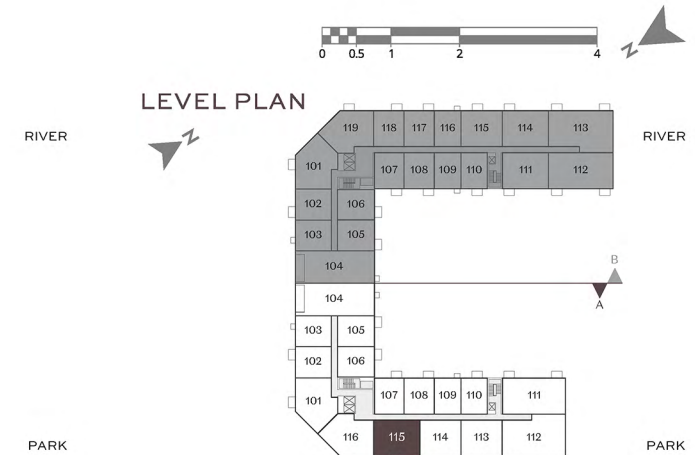
MASTER PLAN



SITE PLAN



LEVEL PLAN



Napomena: Svi materijali, dimenzije i crteži su okvirni. Kalkulacija površina unutrašnjeg i spoljašnjeg prostora urađena je u skladu sa važećim standardom (SRPS U.C2.100:2002) i predstavlja neto površinu stambene jedinice.  
Disclaimer: All materials, dimensions and drawings are approximate. Calculation of internal and external area is fully compliant with local standards (SRPS U.C2.100:2002) and as such it represents the net area of the unit.

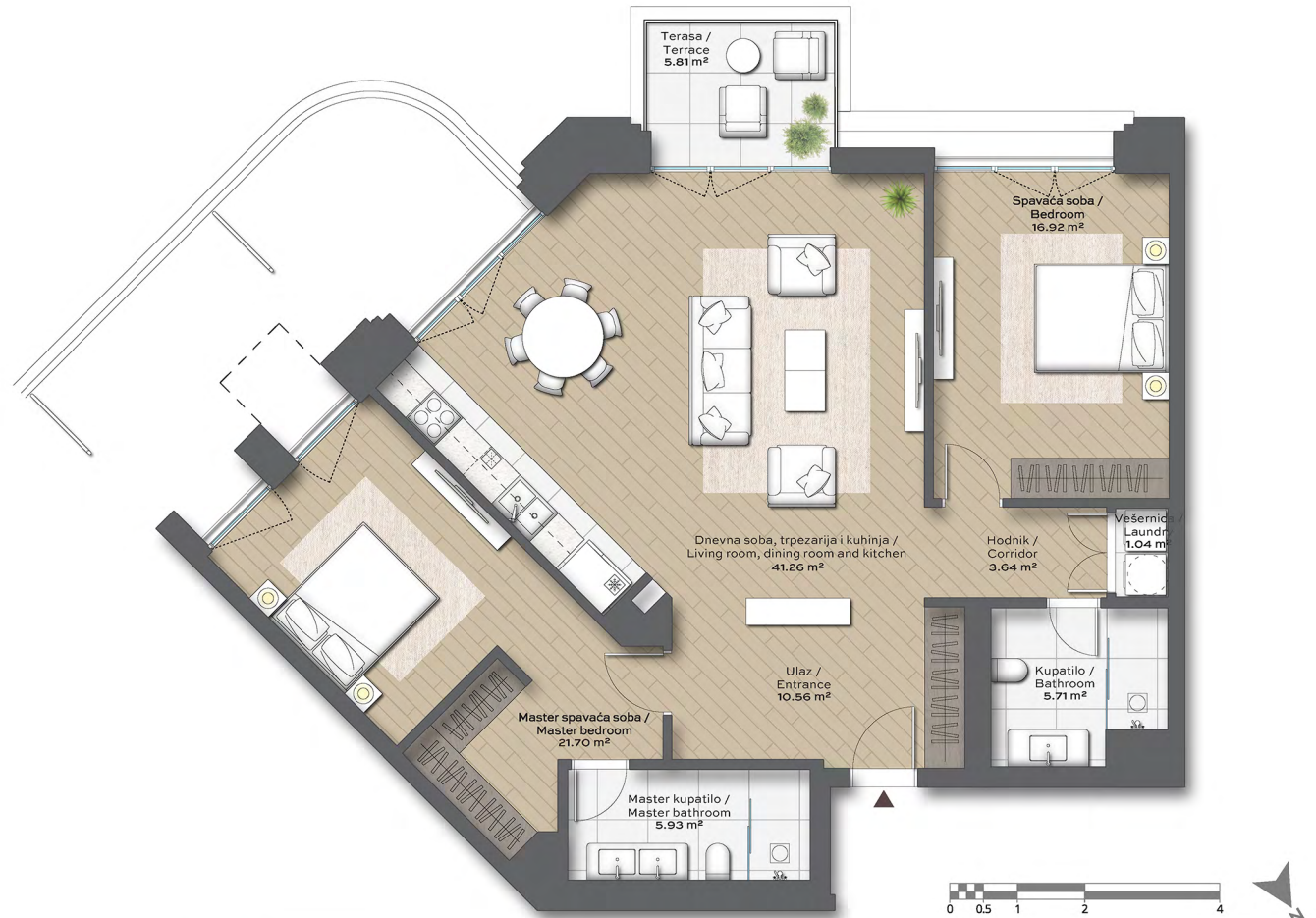




# THE BRISTOL RESIDENCES Belgrade

## Two Bedroom Stan Br. Unit No. A101

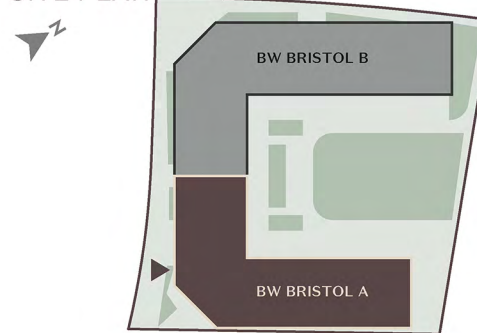
	DIMENZIJE DIMENSIONS
Površina Stana Apartment Area	106.76 m <sup>2</sup>
Površina Terase Terrace Area	5.81 m <sup>2</sup>
Ukupna Površina Total Area	112.57 m <sup>2</sup>



MASTER PLAN



SITE PLAN



LEVEL PLAN



Napomena: Svi materijali, dimenzije i crteži su okvirni. Kalkulacija površina unutrašnjeg i spoljašnjeg prostora urađena je u skladu sa važećim standardom (SRPS U.C2.100:2002) i predstavlja neto površinu stambene jedinice.  
Disclaimer: All materials, dimensions and drawings are approximate. Calculation of internal and external area is fully compliant with local standards (SRPS U.C2.100:2002) and as such it represents the net area of the unit.

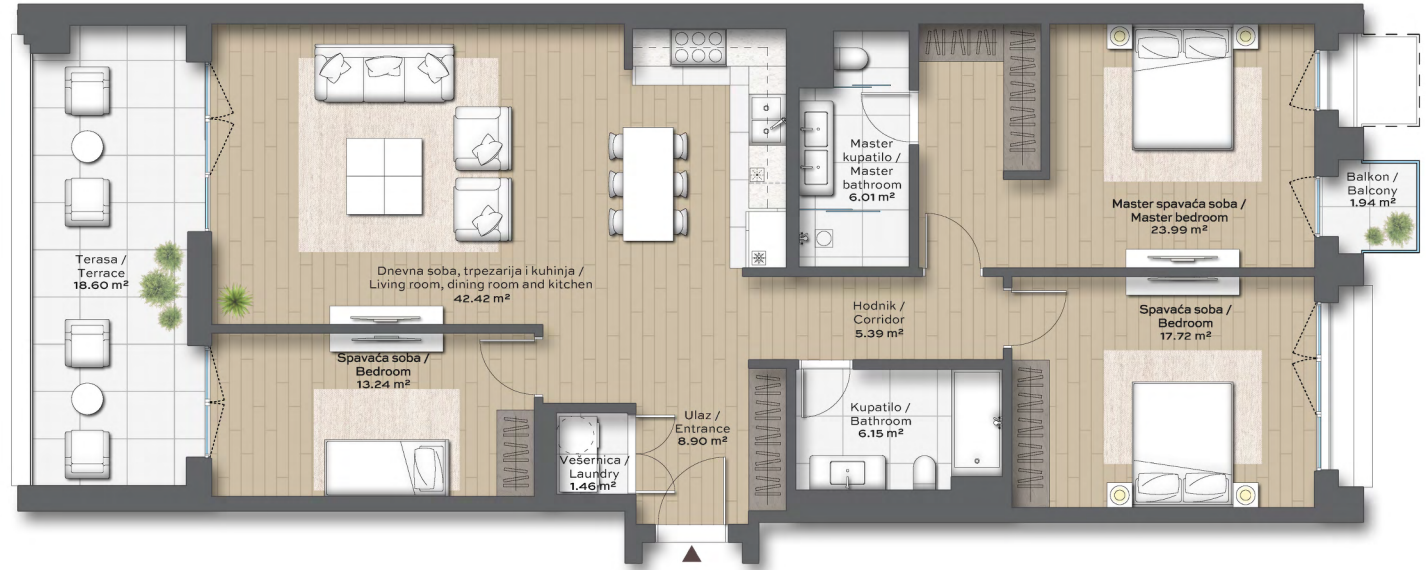


# THE BRISTOL

RESIDENCES  
Belgrade

## Three Bedroom Stan Br. Unit No. A104

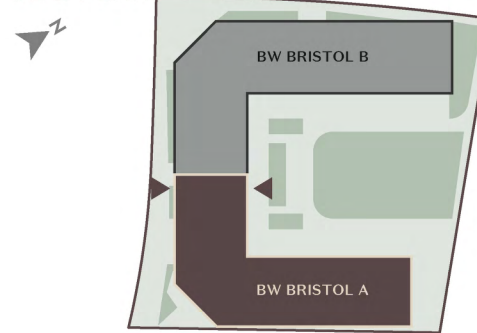
	DIMENZIJE DIMENSIONS
Površina Stana Apartment Area	125.28 m <sup>2</sup>
Površina Terasa Terrace Area	20.54 m <sup>2</sup>
Ukupna Površina Total Area	145.82 m <sup>2</sup>



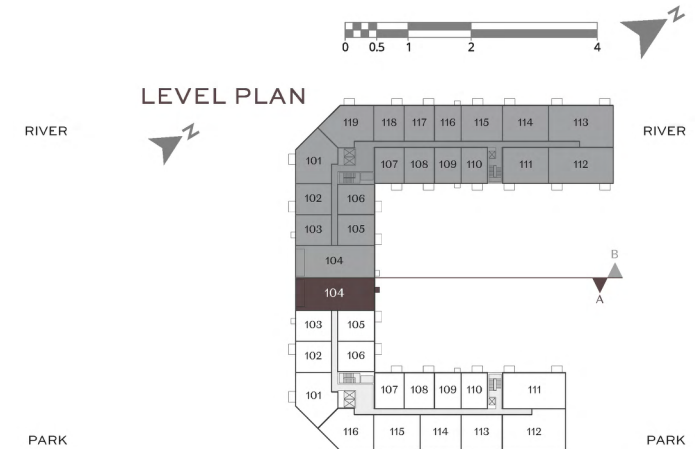
MASTER PLAN



SITE PLAN



LEVEL PLAN



Napomena: Svi materijali, dimenzije i crteži su okvirni. Kalkulacija površina unutrašnjeg i spoljašnjeg prostora urađena je u skladu sa važećim standardom (SRPS U.C2.100:2002) i predstavlja neto površinu stambene jedinice.

Disclaimer: All materials, dimensions and drawings are approximate. Calculation of internal and external area is fully compliant with local standards (SRPS U.C2.100:2002) and as such it represents the net area of the unit.



## Three Bedroom

Stan Br. Unit No. **A111**

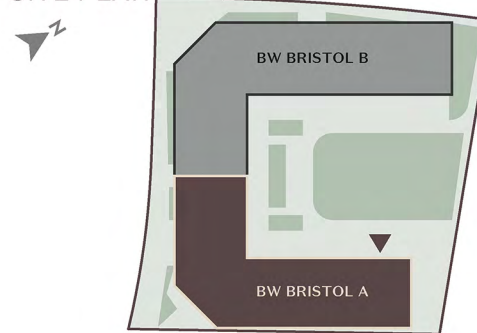
	DIMENZIJE DIMENSIONS
Površina Stana Apartment Area	135.20 m <sup>2</sup>
Površina Terase Terrace Area	11.62 m <sup>2</sup>
Ukupna Površina Total Area	146.82 m <sup>2</sup>



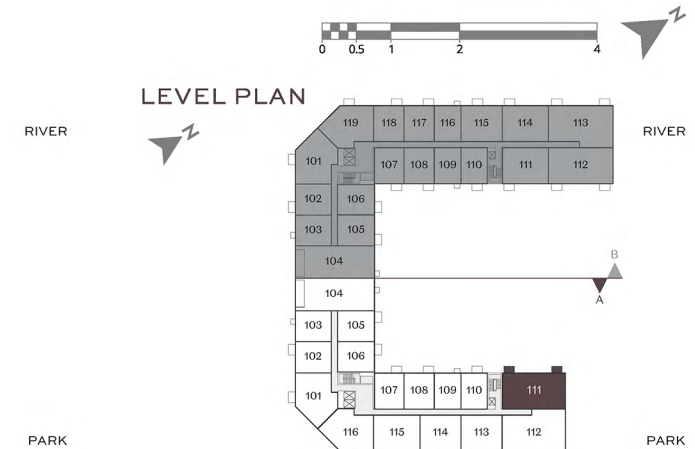
MASTER PLAN



SITE PLAN



LEVEL PLAN



Napomena: Svi materijali, dimenzije i crteži su okvirni. Kalkulacija površina unutrašnjeg i spoljašnjeg prostora urađena je u skladu sa važećim standardom (SRPS U.C2.100:2002) i predstavlja neto površinu stambene jedinice.  
Disclaimer: All materials, dimensions and drawings are approximate. Calculation of internal and external area is fully compliant with local standards (SRPS U.C2.100:2002) and as such it represents the net area of the unit.